



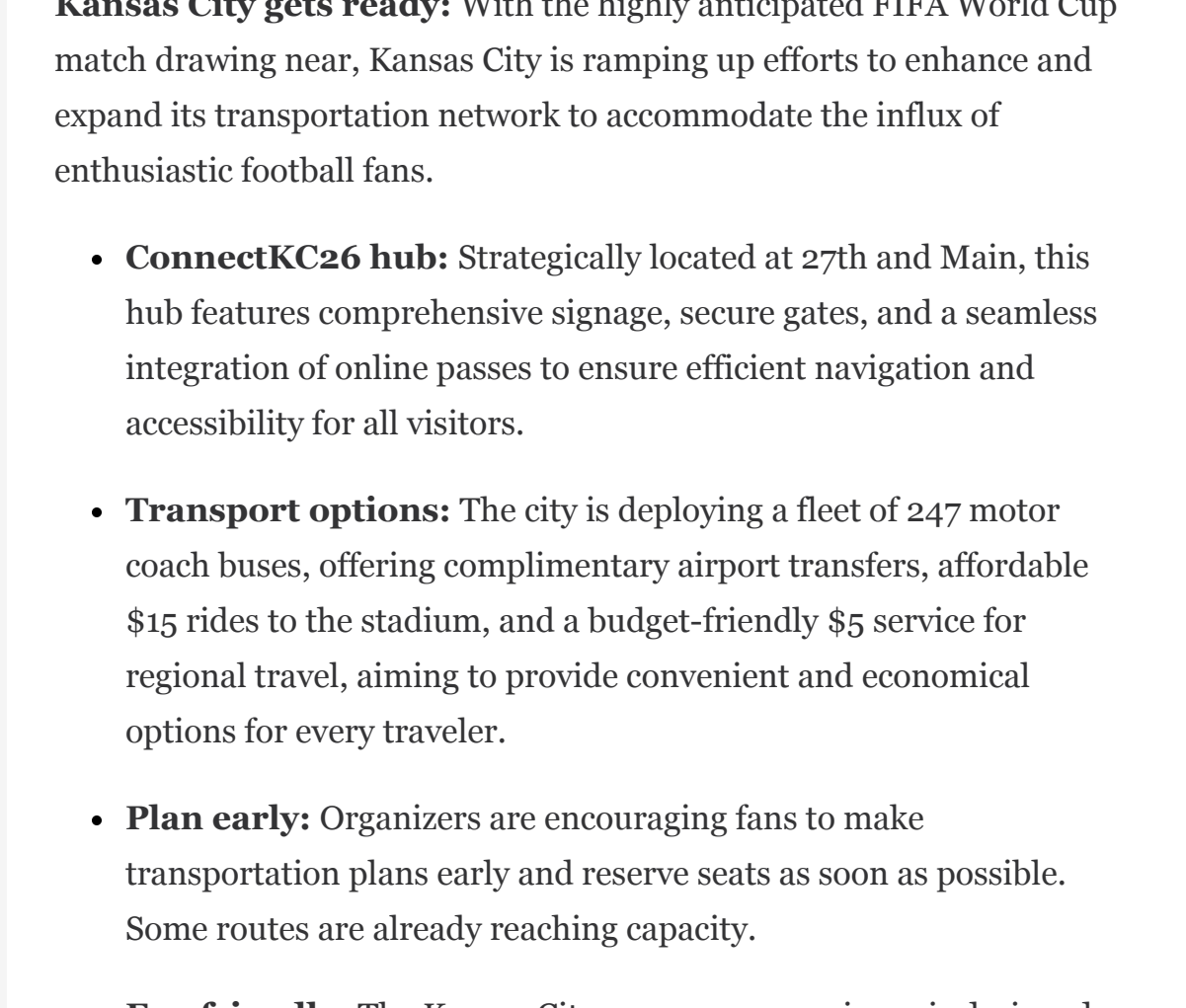
# Public Transportation ISAC Over the Road Bus Intelligence Awareness Daily Report (OTRBIAD)

By APTA • Jun 10, 2026

Smart Brevity® count: 6.5 mins...1732 words

This edition features persistent challenges in public safety and transportation security, and continued efforts from authorities to address these challenges.

## Kansas City and Fort Worth ready transit for FIFA World Cup 2026



Kansas City and Fort Worth have prepared local transportation for FIFA World Cup 2026. Image credit: RideKC

10 June 2026

**Kansas City gets ready:** With the highly anticipated FIFA World Cup match drawing near, Kansas City is ramping up efforts to enhance and expand its transportation network to accommodate the influx of enthusiastic football fans.

- **ConnectKC26 hub:** Strategically located at 27th and Main, this hub features comprehensive signage, secure gates, and a seamless integration of online passes to ensure efficient navigation and accessibility for all visitors.
- **Transport options:** The city is deploying a fleet of 247 motor coach buses, offering complimentary airport transfers, affordable \$15 rides to the stadium, and a budget-friendly \$5 service for regional travel, aiming to provide convenient and economical options for every traveler.
- **Plan early:** Organizers are encouraging fans to make transportation plans early and reserve seats as soon as possible. Some routes are already reaching capacity.

- **Fan friendly:** The Kansas City passenger experience is designed around convenience and comfort from digital booking to air-conditioned motorcoach buses. The transportation network is designed to make getting around the region easier and provide fans with a unique World Cup experience.

- **Threat environment:** GEHA Field at Arrowhead Stadium (Kansas City Stadium) presents a low crime risk with vehicle theft being the most prominent crime. Weather stress on local utility grids represents a local concern as severe weather led to large multi-day outages in July 2025.

**Fort Worth's plan:** The CentrePort Station is primed to manage the significant number of attendees traveling to Arlington for the World Cup games, ensuring smooth transit operations.

- **Trains and light rail:** The plan includes up to 125 charter buses and Trinity Railway Express trains, which are expected to serve between 10,000 and 12,000 fans, highlighting the scope and scale of the logistical preparations.

- About 30,000 more riders are expected to use DART on game days.
- Trinity Metro expects to see about 12,000 riders on game days, about 4,000 more than daily ridership.
- Freight rail traffic will be delayed accommodating TRE trains on game days.
- Officials are working with Union Pacific and other railroads to delay shipments of hazardous materials.

- **User-friendly features:** To enhance the travel experience, multilingual signage and a team of dedicated volunteers will be available, alongside the GoPass app, which offers easy access to tickets and schedules, enhancing user convenience.

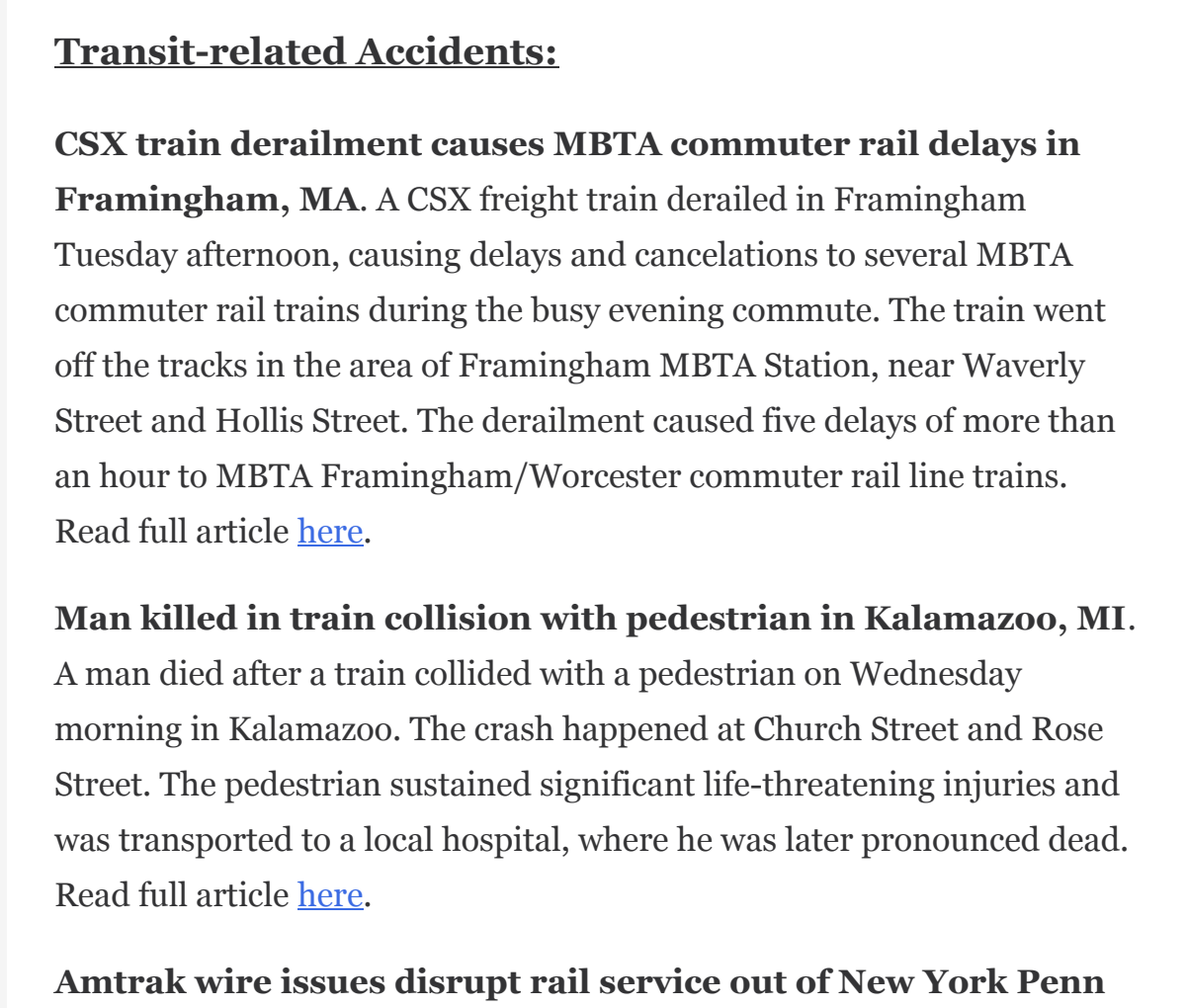
- Passengers arriving at CentrePort/DFW Airport Station will be greeted by volunteers who will direct them to massive shade structures set up in the parking lot.
- Portable restrooms and food trucks are also available for those waiting for a charter bus to Arlington.

- **Return trips:** For return trips, passengers at CentrePort will be separated by city destination to board them onto a train going to either Fort Worth or Dallas. There will be additional trains to get passengers moved out quicker. About 100 volunteers did a successful walk-through of the plan last week.

- **Threat environment:** While the crime threat near AT&T Stadium (Dallas Stadium) is medium with evening risks of trespassing and simple assaults, the crime threat around CentrePort/DFW Airport Station is very low with the most concentrated risk in the morning. Heat represents a local medical surge risk and requires mitigation. The semifinal match scheduled for 14 July represents an elevated risk based on fan engagement and media attention.

Read full articles [here](#), [here](#), [here](#), and [here](#).

## Recent transit-related incidents



A CSX freight car derailed near Framingham Station and caused extensive delays for MBTA Worcester Line commuter trains on Tuesday afternoon in Framingham, MA. Image credit: WHDH

### Transit-related Accidents:

**CSX train derailment causes MBTA commuter rail delays in Framingham, MA.** A CSX freight train derailed in Framingham Tuesday afternoon, causing delays and cancellations to several MBTA commuter rail trains during the busy evening commute. The train went off the tracks in the area of Framingham MBTA Station, near Waverly Street and Hollis Street. The derailment caused five delays of more than an hour to MBTA Framingham/Worcester commuter rail line trains. Read full article [here](#).

**Man killed in train collision with pedestrian in Kalamazoo, MI.** A man died after a train collided with a pedestrian on Wednesday morning in Kalamazoo. The crash happened at Life-Church Street and Rose Street. The pedestrian sustained significant life-threatening injuries and was transported to a local hospital, where he was later pronounced dead. Read full article [here](#).

**Amtrak wire issues disrupt rail service out of New York Penn Station in Manhattan, NY.** Amtrak overhead wire issues have disrupted rail service in and out of New York Penn Station on Tuesday evening. NJ Transit rail service was subject to up to 45-minute delays into and out of Penn Station. Read full article [here](#).

**Female bicyclist struck, killed by CN freight train in Grayslake, IL.** A female bicyclist was struck and killed by a CN freight train in Grayslake Tuesday night. The incident involving a CN train occurred near the Grayslake Metra station. According to Metra, the woman was riding a bike at the time of the collision. Metra said train service had ended for the day and was not impacted. Read full article [here](#).

**Man critically injured after being hit by a train in Wilmington, DE.** First responders rescued a man after he was struck by a train Tuesday night in Wilmington. The incident happened near 14th and Scott streets. The man was rushed to a local hospital in critical condition. Officials have not said why the man was on the tracks. Read full article [here](#).

**South Shore train collides with vehicle at Country Club Road crossing in South Bend, IN.** A South Shore train collided with a vehicle at the Country Club Road railroad crossing on Tuesday night. Saint Joseph County Fire Territory was called to the crossing, just off Edison Road near U.S. 31. Upon arrival, crews found that a passenger vehicle was struck by the high-speed train at the crossing. The sole occupant was able to exit the vehicle and move clear of the tracks before the collision. No injuries were reported. Read full article [here](#).

### Transit Worker Assaults:

**Man arrested for robbing and assaulting a bus driver in Honolulu, HI.** The Honolulu Police Department (HPD) arrested a man following an apparent robbery incident that occurred on a Honolulu City Bus on Saturday afternoon. The suspect entered a bus, which was not in service and unoccupied at the time, and began stealing property from the bus. During the commission of theft, the suspect assaulted the bus driver with a hard object and sprayed them with a fire extinguisher before leaving the scene with stolen property. Police were able to locate the suspect and placed him under arrest for Robbery in the Second Degree, Interference with the Operation of a Public Transit Vehicle, and Use of a Noxious Substance. The condition of the bus driver was not released. Read full article [here](#).

### Transit Crime:

**Suspect sought for sexually abusing elderly woman on 7 train in Queens, NY.** Authorities in New York City are asking the public to help them identify a person accused of sexually abusing an elderly woman aboard a subway train on Friday night. The unidentified individual positioned himself behind the woman, exposed his genitals, and pressed against her. The incident happened aboard the 7 Train approaching the Vernon Boulevard station in Queens. NYPD release photos of the suspect to the public. Read full article [here](#).

**MBTA seeks person of interest in assault on elderly person at Alewife Station in Cambridge, MA.** MBTA Transit Police are requesting the public's help in identifying a person of interest in an assault midday Friday at Alewife Station. The person is wanted in connection to an assault and battery on an elderly person. MBTA Transit Police released a photo of the suspect in the request for public assistance. Read full article [here](#).

## Other News of Interest



Image credit: iStock

### Transit Safety News:

[Update: MARTA Midtown Station shooting suspect now facing federal charges](#)

[Federal judge declares man charged in Charlotte light rail killing incompetent](#)

[Suspect wanted for aggravated assault for threatening an RTA bus driver with a firearm on 27 March in New Orleans](#)

[MS-13 Gang Member Sentenced to 35 Years in Prison for 2019 Murder on Subway Platform in Queens](#)

[Man convicted in 2021 TriMet bus shooting on SE Portland's Hawthorne Boulevard](#)

[Man who stole bus in January in Las Vegas, killed motorcyclist sent to prison](#)

[Bus driver charged in deadly I-95 crashed released from hospital, now in jail](#)

[L.A. Metro releases FY27 budget, expands safety initiatives, funds first sworn police officers](#)

[Tucson's plans to improve transit and community safety](#)

[Moovit partners with L.A. Metro on new app](#)

[New Law Permits Increased Housing Development Near Major Transit Stops Across California](#)

### National Security News:

[NBA Finals Game 4: New York watch party planned at MSG, security and transit plans detailed](#)

[TSA Outlines Transportation Security Measures for FIFA World Cup 2026](#)

[Santa Clara VTA braces for record-breaking surge in FIFA World Cup crowds 6 times bigger than Super Bowl](#)

[Capitol Corridor schedules special trains to Bay Area for FIFA World Cup](#)

[Making World Cup safe in Seattle will take hundreds of officers](#)

[PATCO Unveils America 250 Commemorative Train](#)

[Proposed Bill Would Restore Funding for MS-ISAC Cyber Program](#)

### Global Transit News:

[Man arrested for attempted murder after brutal knife attack in Belfast](#)

[Bus set on fire as Belfast anti-immigration protest erupts after stabbing](#)

[Eurostar reports 20m passengers, London-Amsterdam traffic rises](#)

\*\*\* FAIR USE NOTICE\*\*\*

This message contains copyrighted material whose use has not been specifically authorized by the copyright owner. The PT ISAC is providing this report to ISAC members who have expressed a prior interest in receiving information to advance their understanding of threat activities in the interest of protecting the national infrastructure of the United States. We believe that this constitutes a 'fair use' of the copyrighted material as provided for in section 107 of the U.S. Copyright Law. If you wish to use this copyrighted material for purposes of your own that go beyond 'fair use,' you must obtain permission from the copyright owner.

For questions regarding this document and/or if you know of others that may want to join the PT-ISAC and receive this product, please contact the PT ISAC at email [PT-ISAC@APTA.COM](mailto:PT-ISAC@APTA.COM)

### NOT FOR PUBLIC DISSEMINATION

PT-ISAC encourages members to maintain vigilance and report suspicious activities and incidents to the TSA Transportation Security Operations Center by telephone at 866- 615- 5150 and by e-mail at [TSOC.ST@tsa.dhs.gov](mailto:TSOC.ST@tsa.dhs.gov), and to local law enforcement, their [local FBI field office](#), and [local fusion center](#).

