

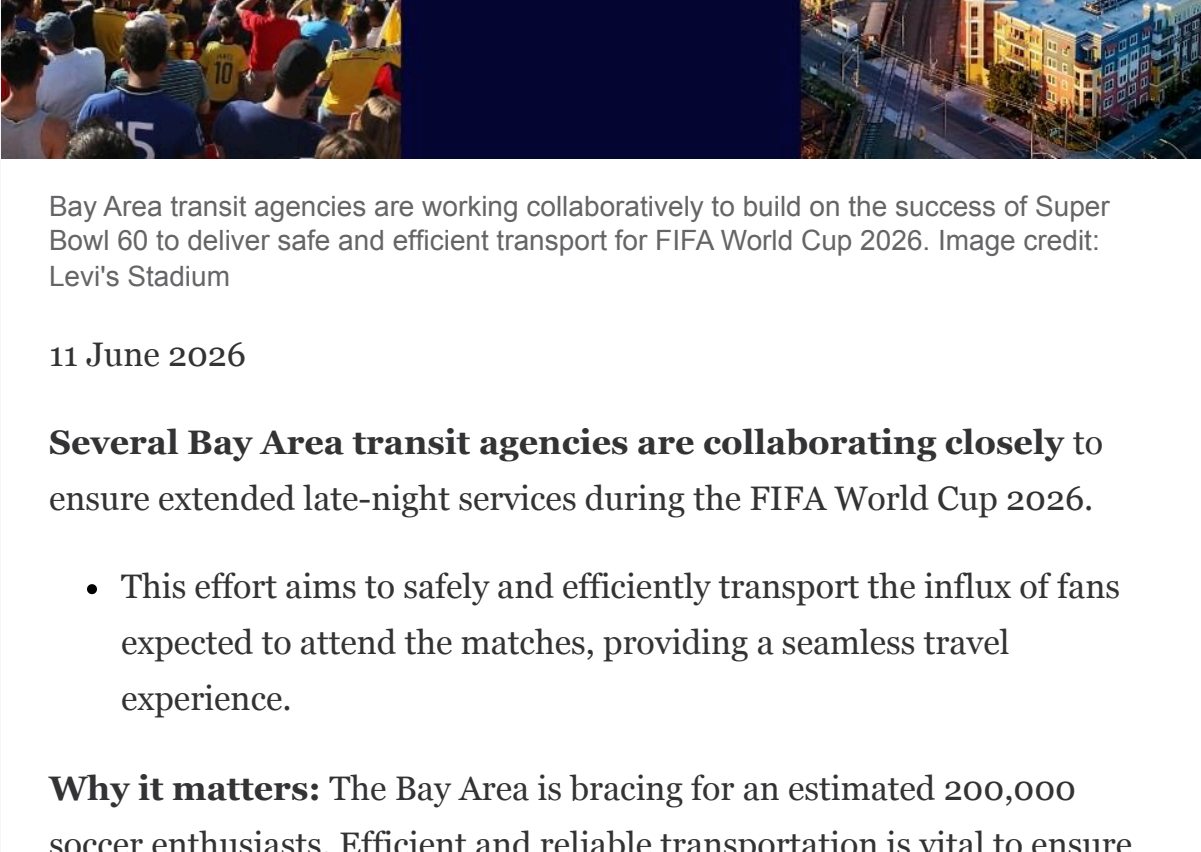
Public Transportation ISAC Over the Road Bus Intelligence Awareness Daily Report (OTRBIAD)

By APTA • Jun 11, 2026

Smart Brevity® count: 5 mins...1306 words

This edition features persistent challenges in public safety and transportation security, and continued efforts from authorities to address these challenges.

Bay Area transit agencies teaming up for the FIFA World Cup 2026



Bay Area transit agencies are working collaboratively to build on the success of Super Bowl 60 to deliver safe and efficient transport for FIFA World Cup 2026. Image credit: Levi's Stadium

11 June 2026

Several Bay Area transit agencies are collaborating closely to ensure extended late-night services during the FIFA World Cup 2026.

- This effort aims to safely and efficiently transport the influx of fans expected to attend the matches, providing a seamless travel experience.

Why it matters: The Bay Area is bracing for an estimated 200,000 soccer enthusiasts. Efficient and reliable transportation is vital to ensure fans have a smooth and enjoyable experience, reducing congestion and enhancing safety.

- The collaboration includes BART, Caltrain, Capitol Corridor, Altamont Corridor Express, the San Francisco Municipal Transportation Agency, and the Santa Clara Valley Transportation Authority.
- The agencies are synchronizing their services to facilitate easy travel to and from Levi's Stadium.
- BART special event trains are planned to align with VTA arrivals, minimizing the risk of fans being stranded and ensuring timely transfers.

The big picture: Levi's Stadium is set to host six World Cup matches, with the kickoff featuring Qatar and Switzerland.

- The stadium, typically the home ground for the San Francisco 49ers, will transform into a venue for international soccer fans.
- World Cup fans transferring between systems will be able to travel by VTA to either the Milpitas BART station via gate F in the stadium or the Mountain View station via gate A for Caltrain service.
- With VTA's proven track record from hosting the Super Bowl, fans can expect efficient and organized transportation via VTA's direct service to Levi's Stadium.

What's next: Transit services, including VTA, SFMTA, Altamont Corridor Express, and Capitol Corridor, will implement late-night shuttles and trains.

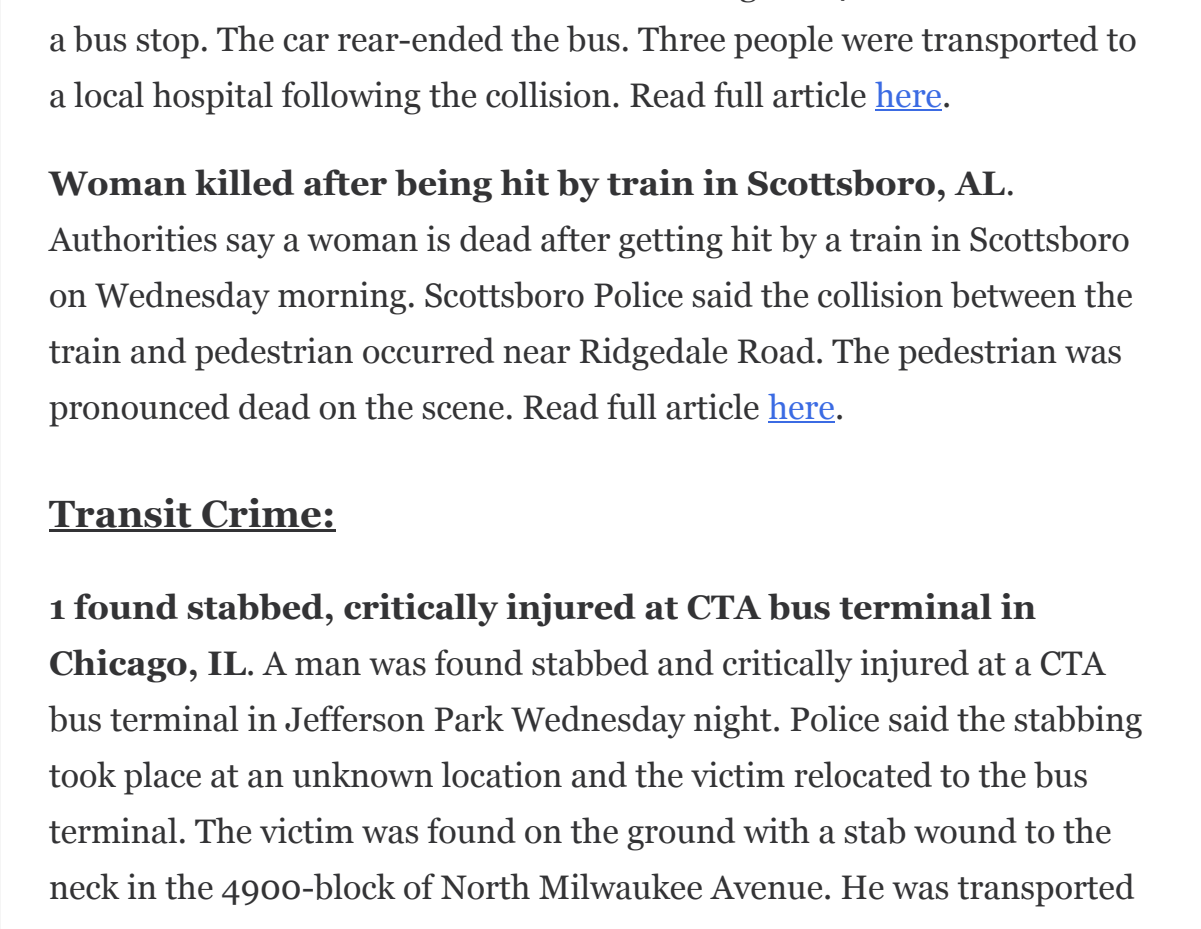
- These services are designed to accommodate the schedules of fans attending late matches.

Threat environment: Levi Stadium (San Francisco Bay Area Stadium) and the Bay Area transit agencies have recent experience hosting Super Bowl 60 in February.

- The overall crime threat at Levi's Stadium and Santa Clara Great America Station are low.
- Opportunistic theft, distraction crimes, and pickpocketing are the most likely crime types targeting pedestrian traffic around Levi's Stadium.
- The area is at elevated risk of protest activities and attempted activist disruptions.

Read full articles [here](#) and [here](#)

Recent transit-related incidents



An Amtrak passenger train struck and killed a woman as she was walking on the tracks on Wednesday afternoon in Baldwin, LA. Image credit: KQKI

Transit-related Accidents:

Woman struck and killed by Amtrak train in Baldwin, LA. An Amtrak passenger train struck and killed a woman in Baldwin on Wednesday afternoon. The woman was walking along the tracks late when she was hit at the corner of Railroad Avenue and Rosebud Road. She was rushed to a local hospital in critical condition but died a short time later. Investigators said do not know why she was on the train tracks. Read full article [here](#).

Child hit, killed by Amtrak train in Springfield, MA. Officials responded to a report that a 3-year-old child was hit by an Amtrak train nearby Emily Street in Springfield on Wednesday evening. The child was transported to a local hospital where she later died from her injuries. An investigation is ongoing into the circumstances surrounding the incident. Read full article [here](#).

3 injured after car crashes into MTA bus on Staten Island, NY. Three people were injured after a car crashed into an MTA bus in Mariners Harbor Wednesday morning. FDNY responded to a report of a crash on South Avenue near Brabant Street. A spokesperson for the MTA confirmed that the crash involved a car striking an S40 bus as it was near a bus stop. The car rear-ended the bus. Three people were transported to a local hospital following the collision. Read full article [here](#).

Woman killed after being hit by train in Scottsboro, AL. Authorities say a woman is dead after getting hit by a train in Scottsboro on Wednesday morning. Scottsboro Police said the collision between the train and pedestrian occurred near Ridgedale Road. The pedestrian was pronounced dead on the scene. Read full article [here](#).

Transit Crime:

1 found stabbed, critically injured at CTA bus terminal in Chicago, IL. A man was found stabbed and critically injured at a CTA bus terminal in Jefferson Park Wednesday night. Police said the stabbing took place at an unknown location and the victim relocated to the bus terminal. The victim was found on the ground with a stab wound to the neck in the 4900-block of North Milwaukee Avenue. He was transported to a local hospital in critical condition. Read full article [here](#).

Investigation into video showing man holding knife threatening passengers aboard light rail in Charlotte, NC. Video taken on a Charlotte light rail over the weekend appeared to show a man with a knife in a heated confrontation with two other passengers and threatening to kill them. Charlotte-Mecklenburg Police and Charlotte Area Transit System indicated the incident happened Sunday night and nobody was injured. Nobody called 911 or reported the incident. The investigation into this incident is active and ongoing as police ask for witnesses to come forward. Read full article [here](#).

Other News of Interest

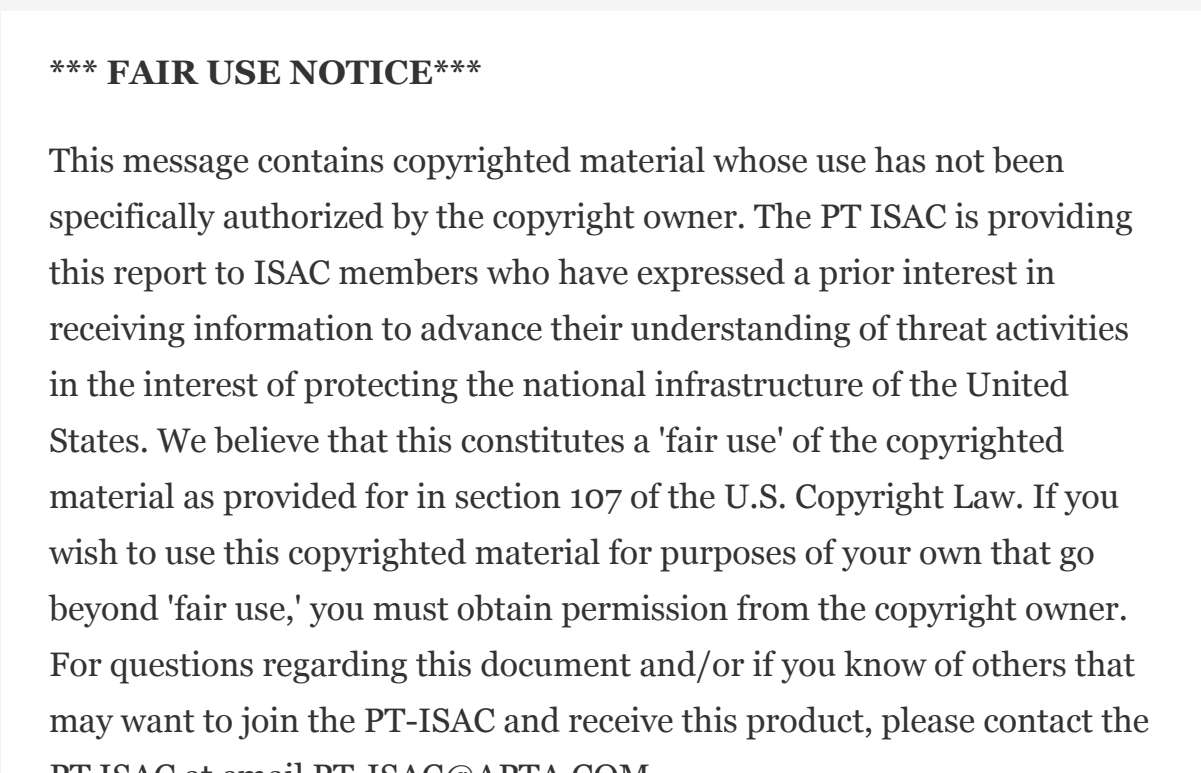


Image credit: iStock

Transit Safety News:

- [Man arrested for 2 May stabbing aboard PRT bus in Wilkinsburg](#)
- [Man convicted in deadly 2022 shooting aboard CTA Red Line train](#)
- [Nashua man sentenced to 7 years in prison for trafficking meth by train](#)
- [CTA Leaders Tout Ridership Gains, Lower Crime Rates on System](#)
- [Tucson approves transit ambassador program and more police patrols amid Sun Tran safety concerns](#)
- [USDOT, Amtrak and developers unveil new Penn Station design](#)
- [Atlanta Beltline launches ATL Spoke autonomous shuttle pilot service](#)
- [HRT implements GoMobile app across bus, light rail, ferries](#)
- [Terre Haute upgrading 5 bus shelters at key stops in 2026](#)
- [Arizona investigators say organized cargo theft crews continue targeting rail corridor after \\$500K train burglary arrest](#)

National Security News:

- [Transit Agencies Nationwide Gear Up to Move World Cup Crowds](#)
- [2026 FIFA World Cup: What Public Safety Officials Need to Know](#)
- [NJ Transit ramps up service, staffing ahead of FIFA World Cup opener at MetLife Stadium](#)
- [Metrolink Debuts Contactless Fare Payment Ahead of FIFA World Cup](#)
- [Tour of Seattle Stadium reveals final preparations ahead of FIFA World Cup competition](#)
- [Transportation plans in place for Sail250 in Norfolk](#)

Global Transit News:

- [US and Iran exchange strikes across Middle East for second day in a row](#)
- [U.S. secretly moved more than 100 million barrels of oil through Strait of Hormuz](#)
- [Police officer in Toronto killed in shooting linked to investigation of a US Consulate attack](#)
- [Puerto Verde Advances US-Mexico Border Connectivity](#)
- [DOJ, FBI Disable 13 Websites Backed by Suspected Chinese Agents That Sought Sensitive U.S. Information from Security Clearance Holders](#)
- [EU-wide cyber exercise tests response to attacks on rail and maritime networks](#)
- [Former Taliban Commander Sentenced to 42 Years in Prison](#)

***** FAIR USE NOTICE*****

This message contains copyrighted material whose use has not been specifically authorized by the copyright owner. The PT ISAC is providing this report to ISAC members who have expressed a prior interest in receiving information to advance their understanding of threat activities in the interest of protecting the national infrastructure of the United States. We believe that this constitutes a 'fair use' of the copyrighted material as provided for in section 107 of the U.S. Copyright Law. If you wish to use this copyrighted material for purposes of your own that go beyond 'fair use,' you must obtain permission from the copyright owner. For questions regarding this document and/or if you know of others that may want to join the PT-ISAC and receive this product, please contact the PT ISAC at email PT-ISAC@APTA.COM

NOT FOR PUBLIC DISSEMINATION

PT-ISAC encourages members to maintain vigilance and report suspicious activities and incidents to the TSA Transportation Security Operations Center by telephone at 866- 615- 5150 and by e-mail at TSOC.ST@tsa.dhs.gov, and to local law enforcement, their [local FBI field office](#), and [local fusion center](#).

